



# DarwinIA SILVER & GOLD Recap

**JUNE** 2024

In this factsheet, you'll find a breakdown of the most relevant data on our monthly seed capital allocation programme, DarwinIA SILVER and GOLD, in the last edition. Read on to discover the top 10 DARWINs that ranked highest in both levels and some interesting metrics about the edition.

# DarwinIA

SILVER



*The level where traders start building their track record*

## DarwinIA SILVER Breakdown

Participants  
at the end of  
the month



7,592



1,284

DARWINs receiving  
a seed capital  
allocation

DARWINs receiving an  
allocation in their 1st  
month's participation

244



€45,135,000

**TOTAL SEED  
CAPITAL  
ALLOCATED**

## PARTICIPANT NATIONALITIES



95 COUNTRIES

## TOP 3 COUNTRIES



**SPAIN**



**ITALY**



**USA**

## Top 10 DARWINs in June 2024

PLACE	DARWIN	MONTH RETURN	6M RETURN	6M DRAWDOWN	LATEST ALLOCATION	HISTORICAL ALLOCATION	TRACK RECORD
# 1	RFEW	13.20%	22.37%	-2.60%	€375,000	€375,000	16/05/24
# 2	FHJW	13.22%	20.85%	-4.93%	€315,000	€345,000	24/04/24
# 3	OEE	5.89%	27.91%	-4.49%	€265,000	€415,000	29/12/23
# 4	EGWR	12.85%	26.43%	-6.53%	€220,000	€300,000	03/04/24
# 5	SMML	15.45%	15.81%	-2.11%	€190,000	€190,000	21/05/24
# 6	MTTL	9.54%	18.86%	-4.50%	€165,000	€195,000	01/04/24
# 7	ZIQG	4.29%	28.49%	-2.83%	€145,000	€470,000	23/02/24
# 8	LAFD	6.19%	19.52%	-3.77%	€130,000	€195,000	19/04/24
# 9	NFHM	14.68%	21.25%	-6.28%	€115,000	€145,000	04/03/24
# 10	CNTR	3.87%	23.59%	-2.03%	€110,000	€325,000	15/01/24

## Special Mentions June 2024 SILVER ranking

*Winner*

**RFEW**

*Best  
debutant*

**RFEW**

*Best  
return*

**WGFS**

*Best  
streak*

**YHLF**

\* To check any historical performance please search by DARWIN **in the ranking.**

\*\* Past performance is not a reliable indication of future results. All returns are gross, before deducting 1.2% management fees and 20% performance fees.

## Recipient return in June 2024



**Median**

2.92%%



**Highest**

18.66% - DARWIN **WGFS**

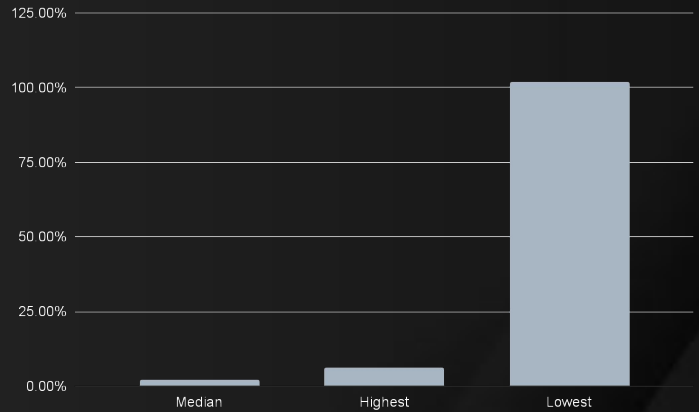


**Lowest**

-3.60% - DARWIN **LJG**



Still got an **allocation** of €30k



## 6M Recipient Return through June 2024



**Median**

9.86%



**Highest**

36.72% - DARWIN **VVNP**

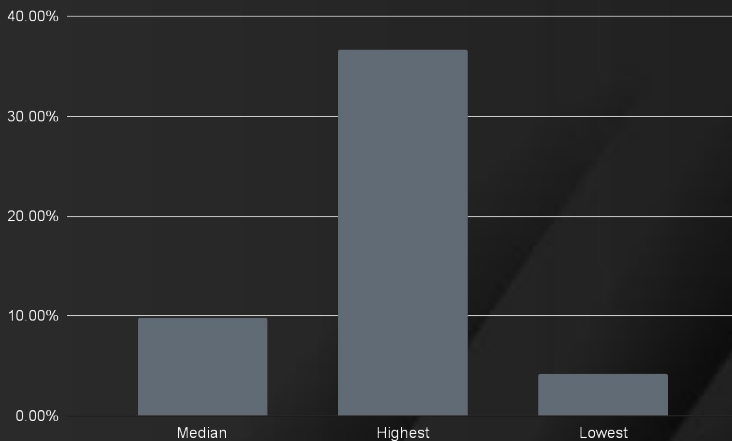


**Lowest**

4.24% - DARWIN **MNDX**



Still got an **allocation** of €30k



## 6M Recipient Drawdown through June 2024



**Median**

-5.23%



**Highest**

-22.41% - DARWIN **IQFI**

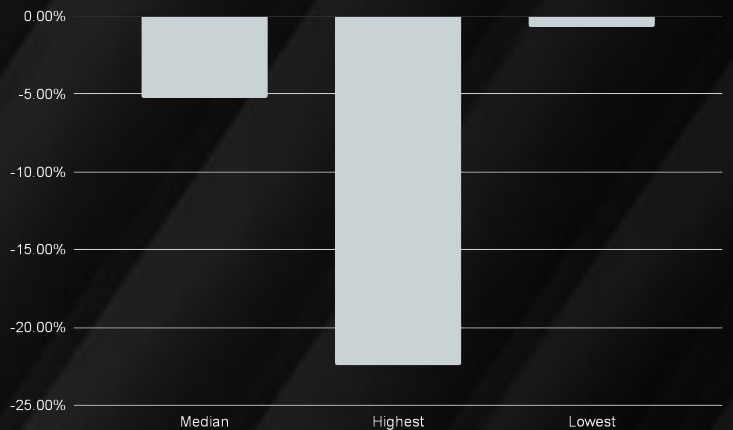


**Lowest**

-0.71% - DARWIN **MNNK**



Still got an **allocation** of €30k



[View full ranking](#)

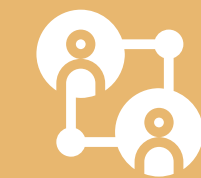
**DarwinIA**  
GOLD



*The level where traders thrive outperforming the market  
month after month*

## DarwinIA **GOLD** Breakdown

Participants  
at the end of  
the month



186



€5,930,000



65

DARWINs  
receiving a seed  
capital allocation

TOTAL SEED  
CAPITAL  
ALLOCATED

## PARTICIPANT NATIONALITIES



40 COUNTRIES

## TOP 3 COUNTRIES



SPAIN



GERMANY



ITALY

## Top 10 DARWINs in June 2024

PLACE	DARWIN	MONTH RETURN	LATEST ALLOCATION	HISTORICAL ALLOCATION	TRACK RECORD
# 1	WVC	6.33%	€500,000	€670,000	20/11/20
# 2	SDKK	6.06%	€350,000	€915,000	04/05/23
# 3	XGQ	5.70%	€275,000	€1,276,871	22/04/19
# 4	IQI	4.73%	€210,000	€808,145	18/11/16
# 5	PHB	4.65%	€170,000	€455,000	05/05/23
# 6	GJB	4.62%	€145,000	€310,000	08/05/20
# 7	VAP	4.47%	€130,000	€255,000	25/10/22
# 8	FYPD	4.45%	€125,000	€625,000	02/05/23
# 9	NVY	4.37%	€120,000	€1,061,149	07/04/17
# 10	SYO	4.11%	€115,000	€4,266,000	02/12/16

## Special Mentions June 2024 GOLD ranking

*Winner*

**WVC**

*Best debutant*

**DFE**

*Biggest assignment*

**UZJ**

*Best streak*

**TXC**

\* To check any historical performance please search by DARWIN **in the ranking**.

\*\* Past performance is not a reliable indication of future results. All returns are gross, before deducting 1.2% management fees and 20% performance fees.



Recipient return in June 2024



Median

2.20%



Highest

6.34% - DARWIN WVC

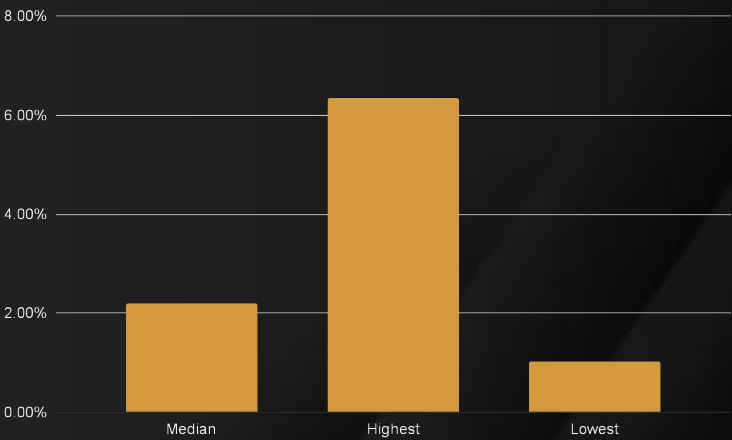


Lowest

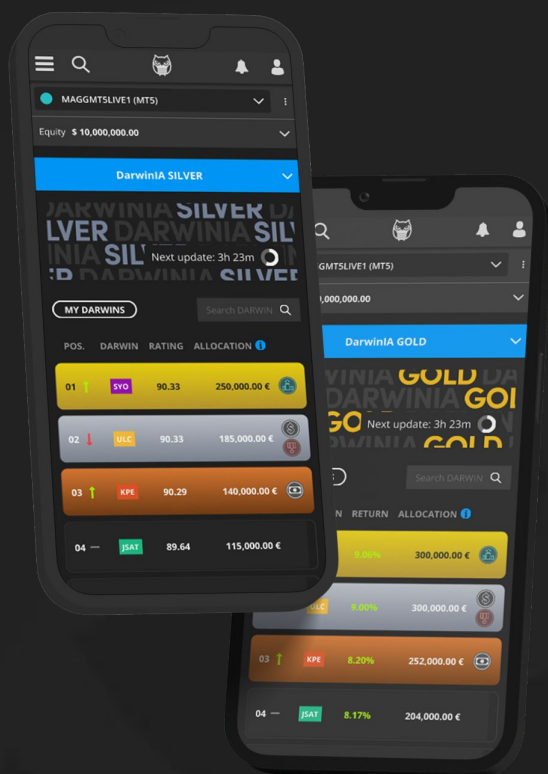
1.02% - DARWIN VMB



Still got an allocation of €50k



[View full ranking](#)



*Thank you for reading the highlights of **DarwinIA SILVER and GOLD** in the last month. We strive to provide you with the most valuable and up-to-date information, and we appreciate your interest and support.*

*We look forward to sharing more exciting updates with you next month!*

***Remember to share your success***



**[darwinex.com](https://darwinex.com)**

CFDs are complex instruments and come with a high risk of losing money rapidly due to leverage. **62% of retail investor accounts lose money when trading CFDs with this provider.** You should consider whether you understand how CFDs work and whether you can afford to take the high risk of losing your money. Past performance is not an indicator of future results.

Seed capital allocations in DarwinIA SILVER and GOLD are virtual (also called notional) allocations. You can read more about them [here](#).

The Darwinex® brand and the Darwinex.com domain are commercial names used by Tradeslide Trading Tech Limited, a company regulated by the Financial Conduct Authority (FCA) in the United Kingdom with FRN 58646, with company registration number 08061368 and registered office in Acre House, 11-15 William Road. London NW1 3ER, UK. and by Sapiens Markets EU Sociedad de Valores SA. a company regulated by the Comisión Nacional del Mercado de Valores (CNMV) in Spain under the number 311, with CIF A10537348 and registered office in Calle de Recoletos, 19, Bajo, 28001 Madrid. Spain.